



SIR WILLIAM BORLASE'S
GRAMMAR SCHOOL

SIXTH FORM

OPEN EVENING



*Inspire
Empower
Shape The Future*



SIR WILLIAM BORLASE'S GRAMMAR SCHOOL



*Inspire
Empower
Shape The Future*

Our Vision and Purpose

To Inspire, to Empower, and to Shape the Future

Our Aims

A rich, challenging
curriculum

Opportunities to excite
and open minds

Passionate, specialist
teachers

A happy, supportive
community

Our Values

Te Digna Sequere, to Follow Things Worthy, is the **Borlase Character**, encompassing

ASPIRATION ENTHUSIASM INTEGRITY RESPECT KINDNESS COURAGE RESPONSIBILITY

Our Students

Global Citizens &
Leaders

Cultured, Empathetic
Contributors

Creative Solutionists

Healthy, Fulfilled
Individuals



ACADEMIC CURRICULUM

3 A Levels from:

4th A Level

AS Level

Enrichment

Art, Biology,
Business, Drama,
Chemistry, English,
Computer Science,
Dance, Economics,
French, Geography,
German, History,
Maths, Music, PE,
Physics, Politics,
Psychology and
Spanish

Further Maths

AS Dance

AS French

AS German

AS Spanish

EPQ
Sci. *Gold Crest Award*
DiSE
BTEC Tech. Theatre



Making the Most of your Academic Studies at Borlase

Year 12 Students have 5 terms in which to enjoy the Borlase experience and leave with excellent grades!

- Make every lesson count - prepare well and follow up every lesson

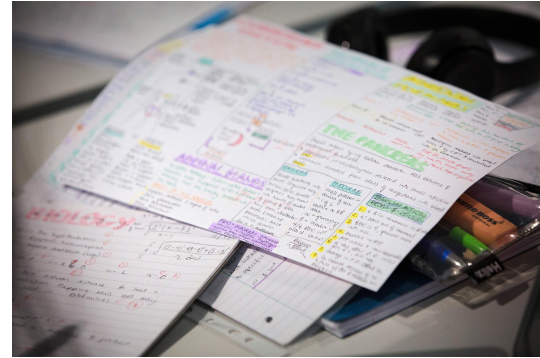
Year 12 Average Hours per week

- 4.5 hours per subject taught lessons
- 1 Enrichment and Extension lesson
- 1 Lecture series session
- 5 Supervised study periods
- 1 Games session
- 3.5 Private study periods



Independent study

- Silent study is the most productive
- Three subject students have **five hours of supervised, silent study in their timetable in M8U**
- Four subject students are expected to work out at least four hours of silent study
- Independent study - 20 hours per week recommended (including at home/weekends) ie 6-8 hours per subject.
- In private study time, students can study in Mimis (collaborative), new hall.



STUDENT SUPPORT

- Each student is designated a Form Group with Tutor
- Vertical groups (years 12 & 13 together)
- Dedicated Student Support Officers
- Careers Staff

Pastoral activities include:

- Key stage and chapel assemblies
- House assemblies and competitions
- House identity and community



Support, Extension and Enrichment

Academic support groups

Formal supervised study

Study skills training through E&E and tutor time

Extension through E&E, competitions and student-led societies

'Wider horizons' lecture series and assemblies

UCAS support through Futures programme

Inspire, Empower... to shape the future

Assemblies: staff and student led

Tutor programme: life skills well being community

Integration residential - Problem Solving and Outdoor Ed.

Leadership/ teamwork: prefects, clubs, sport & societies

Student voice through assemblies, tutor and competitions

Careers and Higher Ed Guidance - inc. Masterclass

Te Digna Sequere: service element

Making an effective contribution to the life of the school through service

Engage in Borlase's contribution to the community through volunteering and mentoring.



THE CO-CURRICULUM



- Educational Visits
- Choirs, Bands and Orchestras
- Academic Societies
- Plays and Musicals
- Sports Teams and Wednesday Games
- Lecture Series (year 12), PSHE (year 13)
- Form Time
- Careers and Higher Education guidance
- Student Voice Council
- Prefect Opportunities in Year 12 and 13
- Duke of Edinburgh Gold Award



FUTURE PLANNING

Dedicated Careers staff

Work Experience

Futures Evening

Masterclasses

On-going weekly Lecture Series



LEADERSHIP

Leadership opportunities:

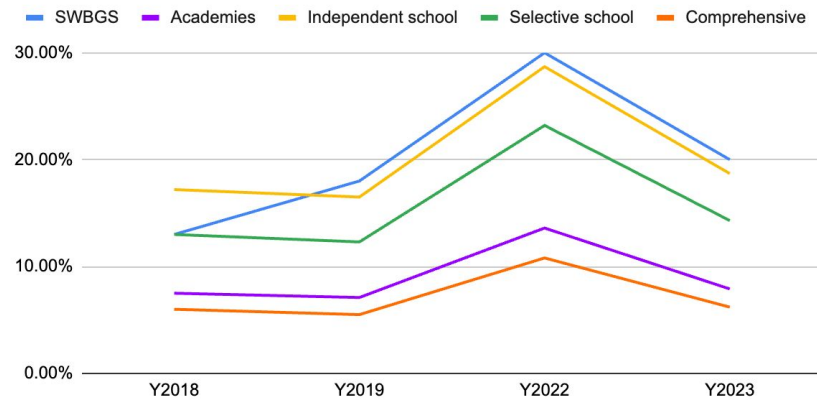
- Societies
- Mentoring (academic)
- Peer support for well being
- Sports coaching
- Extra curricular clubs (especially in performing arts)
- Outreach to primary schools
- Volunteering
- Prefect and House Prefect systems
- Student voice
- Volunteering in the community (e.g. Primary Mentoring / Chiltern Rangers / Food Banks)

Peer Support in Schools (PSIS)

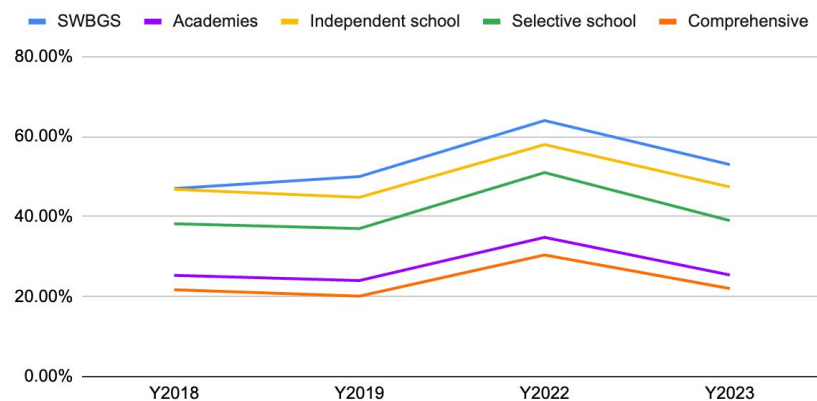


ACADEMIC ACHIEVEMENT

SWBGS vs Other Centre Types A level A*



SWBGS vs Other Centre Type A Level A and Above



20% of Grades were A*

53% of Grades were A and A*

80% of Grades were B and above

14 students achieved four A*

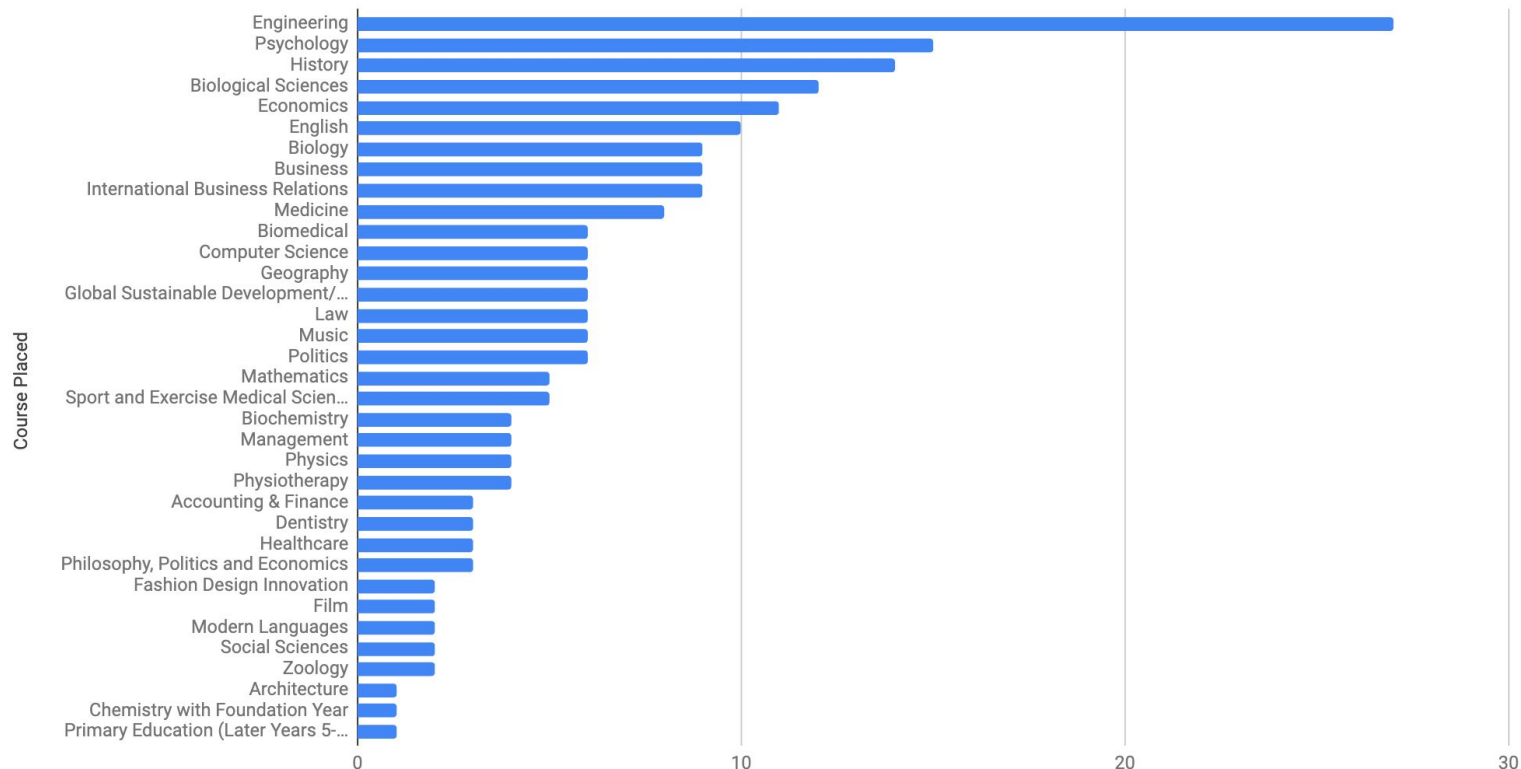
18 students achieved three or more A*

128 students achieved all A*/B

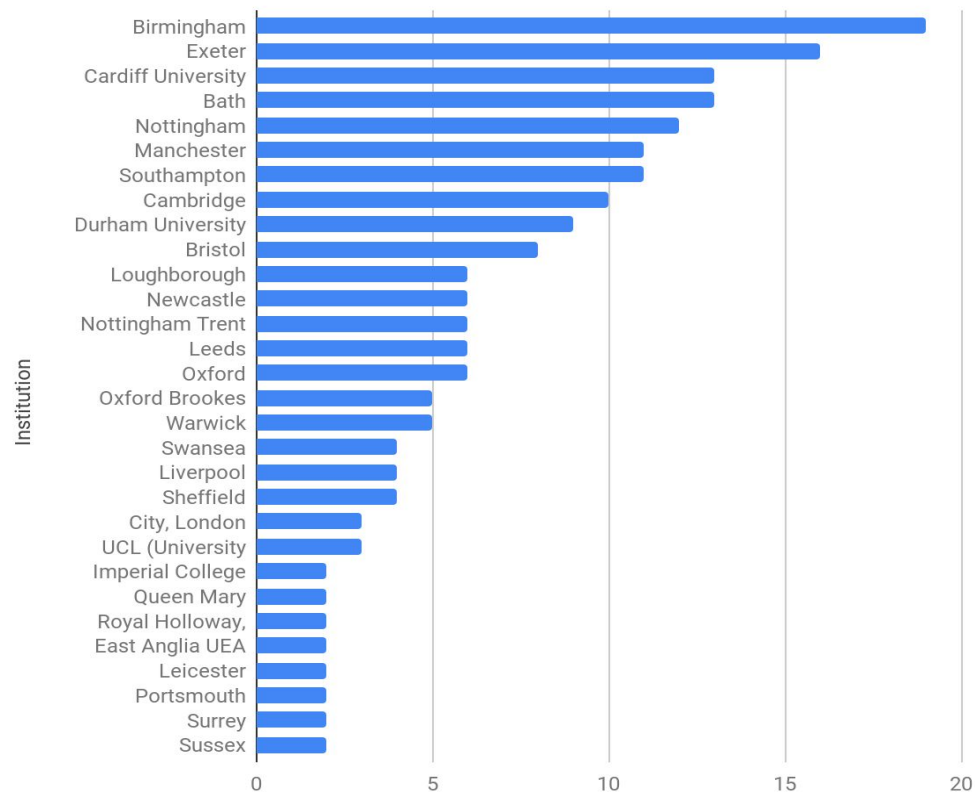
67 students achieved all A*/A

Student Destinations 2023

DESTINATIONS



Students Placed vs Institution



DESTINATIONS

APPLICATION & ENTRY

Application Process

Via the online form which will be available on the website on 13 November for both internal and external students.

Internal Deadline: 5th February 2024

External Deadline: 5th February 2024

Academic Entry Criteria for Borlase:

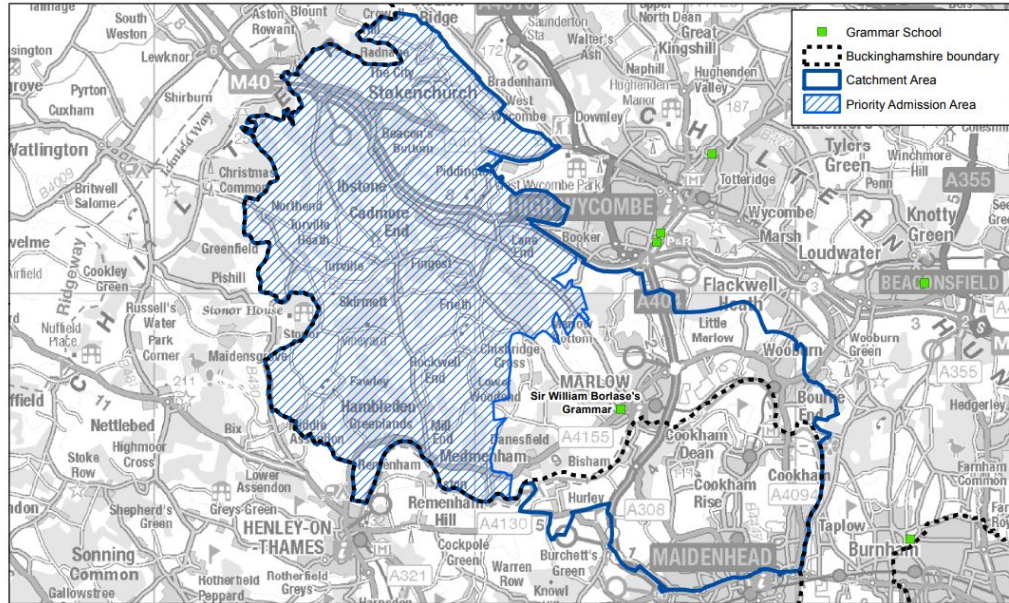
- APS of ≥ 6.4 across **all** GCSE subjects (not Best 8)
- ≥ 5 s in English Language and Maths
- Meeting the Subject Entry criteria which are on our website:
 - 7s in facilitating subjects
 - 8 for Further Maths



ENTRY CRITERIA

What this meant in 2023:

- 136 Internal Year 11 students were accepted into the Borlase Sixth Form
- 45 External Year 11 students from our catchment and priority admission area were accepted into the Borlase Sixth Form
- 49 External Year 11 students from outside our catchment area were accepted into the Borlase Sixth Form



SUBJECT TALKS

